



[admissions@rishihood.edu.in](mailto:admissions@rishihood.edu.in)

[www.rishihood.edu.in](http://www.rishihood.edu.in)

+91 89299 00404 | 1-800-120-6631

## START YOUR JOURNEY *towards Impact*

India's first and only Impact University

[www.rishihood.edu.in](http://www.rishihood.edu.in)



“

*“The leaders of our society have never been generals or kings but **Rishis**. When you are a **Rishi**, you become a blessing to mankind. This is Rishihood.”*

*- Swami Vivekananda*

”



## *about* **RISHIHOOD**

Rishihood University is India's first and only Impact University. Every initiative at Rishihood is driven by a larger goal to create impactful leaders across various domains of life. Rishihood is the culmination of the vision of various leading academic scholars, industry mentors, social sector contributors, spiritual leaders, public leaders, and many more. We deliver a learning experience that is Indian, Global, and Futuristic. Our great quest is to bring up learners as impactful leaders embodying 'Rishihood' - the state of being a Rishi.

Our learners will go on to become harbingers of change and shape the future of the world.

Explore and immerse yourself in a journey toward achieving excellence. Be part of an impact-driven ecosystem.

## *message from* **THE CHANCELLOR**

Nations are built over centuries. Similarly, institutions are built over decades. India's role in a 21<sup>st</sup> - century world is that of immense responsibility, & we must align our institutions' objectives to the nation's larger vision.

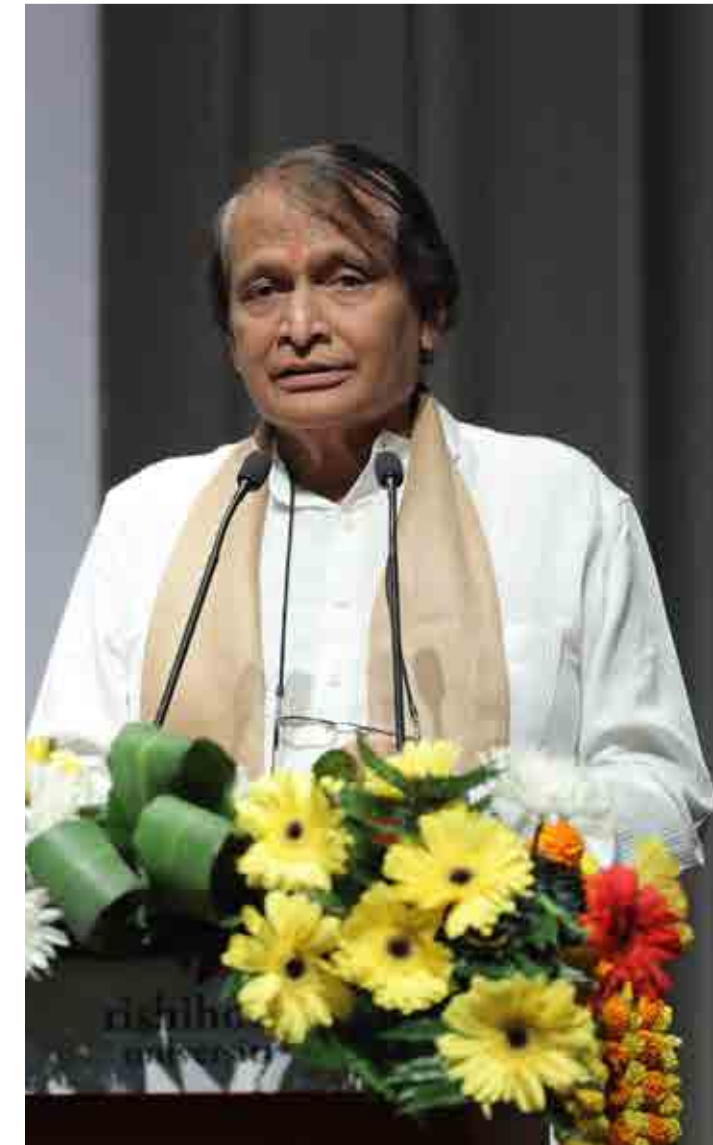
Rishihood University is founded on the principles of impact and leadership. Our institution focuses on high-impact areas such as entrepreneurship, healthcare, creativity, education, and public leadership.

India's spiritual wisdom provides solutions to many of the pressing problems of today such as sustainability, mental health, global peace, and harmony. As the name signifies, our objective is to inspire students, faculty, and the community to reach 'Rishihood', the state of being a Rishi. Passionate and conscious individuals can create prosperous and harmonious societies.

I welcome courageous and curious students to explore the world of Rishihood.

### **SURESH PRABHU**

Former Cabinet Minister,  
Founder & Chancellor,  
Rishihood University





*message from*  
**THE VICE CHANCELLOR**



Rishihood University is India's first and only impact university. As one of the founders of Rishihood, I can say with conviction that this statement is the living spirit of Rishihood. It is time that we move beyond degrees and placements as the end goal of higher education. The purpose of education envisioned by the thought leaders of our civilization and that which has motivated us to build Rishihood University is much higher. The purpose of education is to achieve the highest potential in a learner i.e. Rishihood. Rishihood University provides a unique mix of globally relevant education that is rooted in Indian ideas, quality and affordable education, and a multi-disciplinary exposure with cutting edge skills of a specialist. We believe that to achieve this outcome, education cannot be limited to the classrooms. We have a fully-residential campus where living and learning seamlessly integrate throughout the day. We have active participation with society, industry, researchers, entrepreneurs, and policymakers. This keeps our learning focused on solving the biggest challenges faced by humanity and prepares our learners for the real world.

It is time we have universities driven by a higher purpose, that have a strongly committed board to back it, and that redefine the way education is imparted both within and outside the classroom. Rishihood is a bold initiative to fulfill this idea.

I welcome you all to be part of the Rishihood vision!

**SHOBHIT MATHUR**

Vice Chancellor  
Rishihood University

# *learning* FRAMEWORK

Our learning framework is a fluid design that combines the three attributes of Curiosity, Courage, and Joy. The purpose of learning at Rishihood is defined through its vision, and every program helps fulfill that.

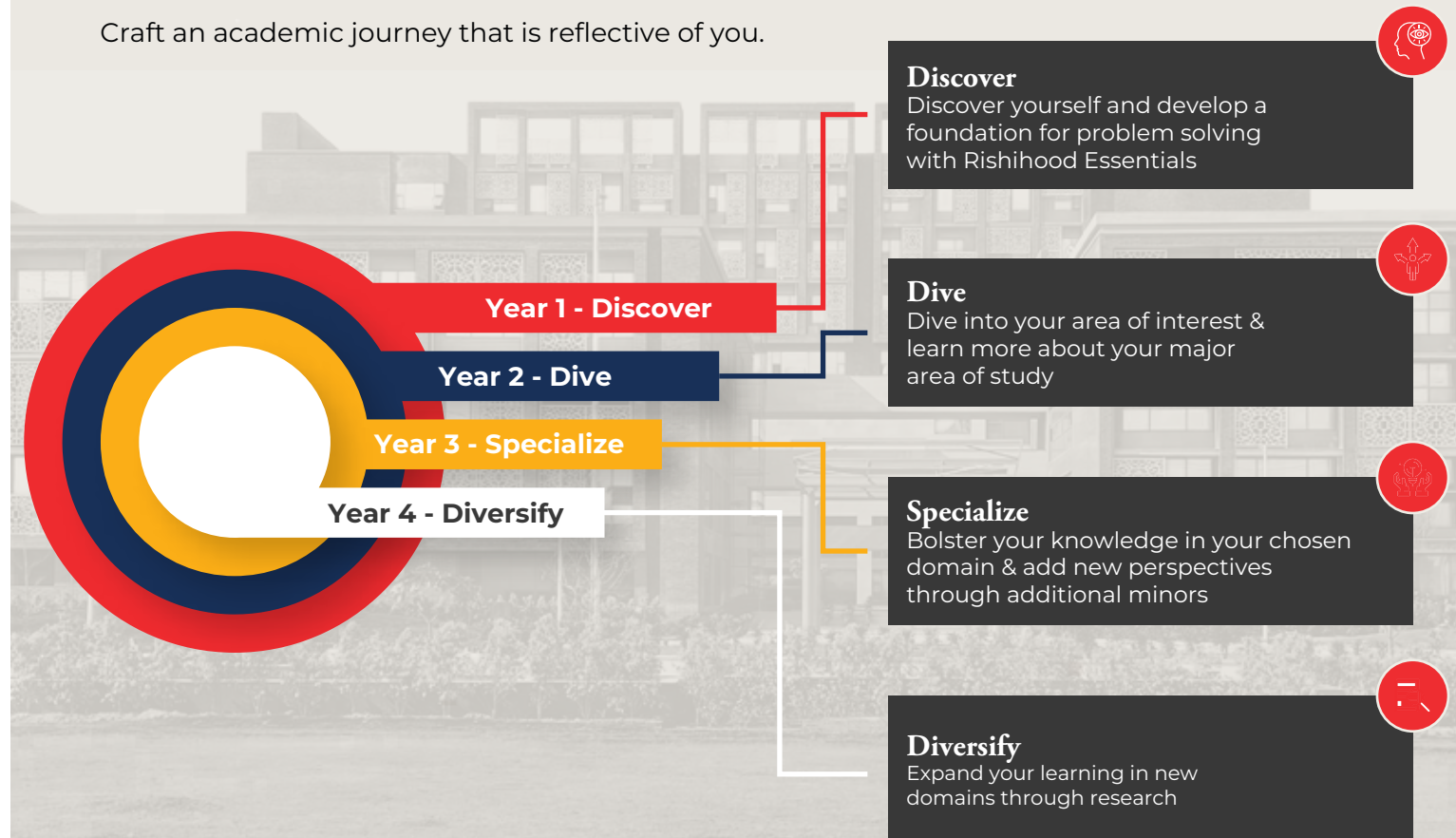
Learning at Rishihood stems from an interdisciplinary education. It is easy to understand, with each level leading to the next one. Our courses are designed to ensure that you experience a balance of academic rigor, professional exposure, social consciousness, and joyful living. As a unified force, these attributes direct a learner to become an impactful leader.



# *undergraduate* PROGRAMS

The world is multidimensional. You are expected to work through different fields and find solutions that apply to every situation. The learning framework at Rishihood University allows you to explore diverse disciplines and choose what is best for you. You can study Product Design and combine it with Management or choose Psychology and take Media as a minor; the choice lies with you.

Craft an academic journey that is reflective of you.





## Discover - The Foundation

Rishihood Foundation is a foundation for lifelong learning. It trains the learner on multi-disciplinary thinking for problem solving. Most importantly it gives the learner a purpose for life and purpose for learning - something that is sorely missing in our education today. The Foundation consists of a set of classroom courses, sports, spiritual practice and community engagement. A carefully crafted combination to inculcate the three graduate attributes of Rishihood - Jigyasa (curiosity to learn), Chikeersha (will to act), and Ananda (inner joy).

**Life Skills | Vocational Skills | Community Projects | Sports**

Once the learners go through the Foundation courses, they can switch to a different area of specialization from their chosen one.

## Dive - Explore Your Interest

The discovery process of a learner's journey commences in the second semester of the UG program and spans through the second year of study. Learners are introduced to their Major specialization area and are then pushed to deep-dive in their journeys. Specialized knowledge about their major is gained during this phase of the study.

## Specialize - Gain New Perspectives

In an interdisciplinary world, it is imperative to look through a problem from multiple viewpoints. A 360-degree understanding of all aspects of a problem makes our learner's, true problem solvers. In the third year of study, learners can introduce a different specialization area as a Minor. You can choose to combine a Design major with a Psychology minor or a Business major with a Design minor - the choice lies with you.

## Diversify - Expand Knowledge through Research

The fourth year of study at Rishihood is where everything comes together. Learners are encouraged to apply their field knowledge to research and refine their understanding of the specialization. The year consists of thesis-driven frameworks, equipping the learners with a stronghold on their area of specialization. Learners can also add another Minor area of specialization to their knowledge basket.

### Degrees Offered:

- **BA (Hons) Psychology**
- **BA (Hons) Economics**
- **BBA**
- **BCom (Hons)**
- **B Design**
- **BSc (Hons) - Public Health; Hospital Administration**



# *postgraduate* PROGRAMS

Postgraduate programs at Rishihood University are offered across the fields of Management, Design, and Public Leadership. The programs are a blend of academic and technical fields. Learners are expected to imbibe and apply the vast knowledge they gain to resonate with the institution's ideal of academic rigor, discipline, and impact-outcome .

## Degrees Offered:

### MBA

The MBA program is focused on creating Impact-driven leaders. The program trains learners to connect the dots and to look at business problems with an integrated and interdisciplinary perspective. The program offers learners to pursue a dual specialization, thereby widening their career scope.

#### Specializations offered include:

- 🏦 Finance
- 📊 Marketing
- 👤 HR
- 🌐 International Business
- 👤 Entrepreneurship

Learners can choose any two specializations in their second year of study.

### M Design

The M Design program is an application-based program focusing on social innovation and design integration. With a more in-depth understanding of design, a learner's visual thinking evolves and helps one become an active creator that aims to shape a better future. From industry-level internships to on-campus live projects and workshops with renowned professionals, learners can witness constant growth in themselves.

#### Specializations include:

- 🏠 Interior Architecture
- 🏭 Industrial Design
- 👗 Fashion
- 🧵 Textile & Innovation
- 🗣️ Communication Design



## Postgraduate Diploma in Public Leadership (PGDPL)

The 1-year PGDPL is a launchpad for every learner driven by the desire to make a difference and create a systemic impact in Governance. The program is designed for aspiring changemakers looking for a functional shift into more public-facing impact roles.

Specializations offered include Development and CSR, Politics and Governance, Public Policy - Research and Consulting, and Media, Culture and Entertainment.

# career PATHWAYS

## Entrepreneurial Leadership

The world has changed and will change further. When it comes to business, the most profound change is the nature of work. In a VUCA world, we prepare our learners for success with an entrepreneurial mindset - a mind that is curious, courageous, and enjoys change. By nurturing an entrepreneurial mind, our programs alter your professional future.

As a Rishihood learner, you have the facility to choose from a multitude of career opportunities. The Career Services office at the University works seamlessly to identify the right fitment for students across academia and professional services.



Entrepreneurs



Business Analysts



Investment Bankers



Public Leaders



Corporate Psychologists



Human Resource Managers



Graphic Designers



Interior Architects



Branding Specialists



Product Evangelists



Civil Services



Healthcare Managers



Postgraduates



Consultants



Sculptors



Therapists



Researchers



Communications Specialists



Product Designers



Fashion Designers



Artists



Retailers

amongst others

An indicative list of some of our recruiters includes:



chaos



convergence

# OF GLOBAL MINDS

Faculty at Rishihood University consist of passionate academic scholars from across the globe who aspire to create change through their curricula and teaching methodologies. Our academic strength includes top scientists, researchers, and teachers who have left behind their comfortable lives for want of contributing to the cause of nation-building.

A residential campus like Rishihood also provides ample opportunities for interaction with thinkers and leaders from diverse fields like business, media, public policy, sports, literature, and law, amongst others. This convergence of global minds elevated the entire learning experience at Rishihood.



**AMISH TRIPATHI**  
Author & Diplomat



**SARAH ATKINSON**  
Former Head Academic  
Standards University  
of the Arts, London (UK)



**SRIDHAR VEMBU**  
Founder and CEO  
Zoho Corp



**MOTILAL OSWAL**  
Founder & Chairman,  
Motilal Oswal Group  
Co-founder,  
Rishihood University



**SANJEEV SANYAL**  
Member,  
Economic Advisory  
Council to the  
Prime Minister



**ANANDMURTI  
GURUMAA**  
Spiritual leader



**J SAI DEEPAK**  
Advocate  
Supreme Court  
of India



**(LATE) SAROJ KHAN**  
Choreographer



**PRATAP BOSE**  
Chief Design Officer  
Mahindra &  
Mahindra Ltd.



**SWAROOP RAWAL**  
Educator, Actor,  
Miss India Awardee



**DANIEL KHACHAB**  
Co-Founder and  
CEO Choco

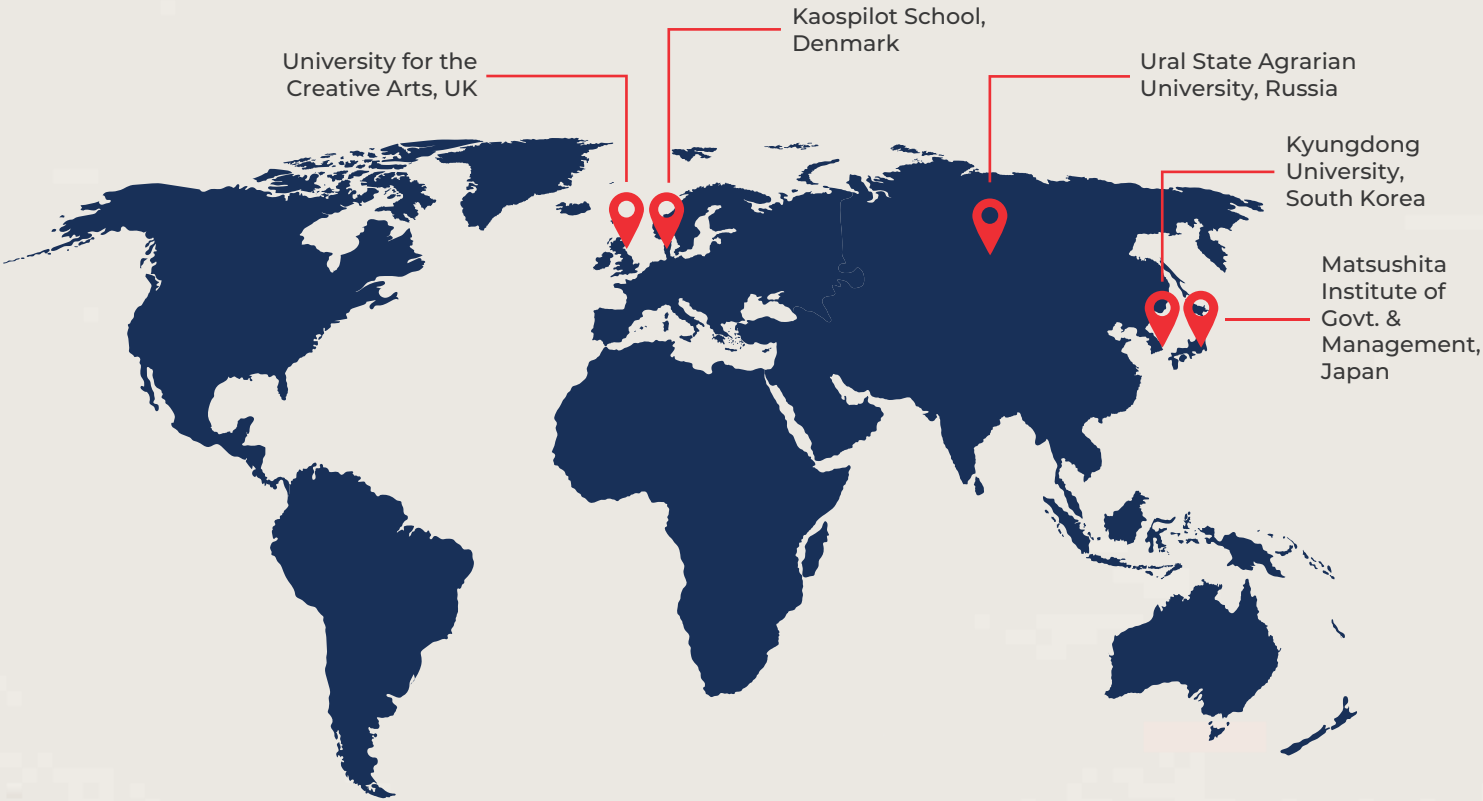


**ANURADHA  
PAUDWAL**  
Indian Playback Singer  
Padmashri Awardee

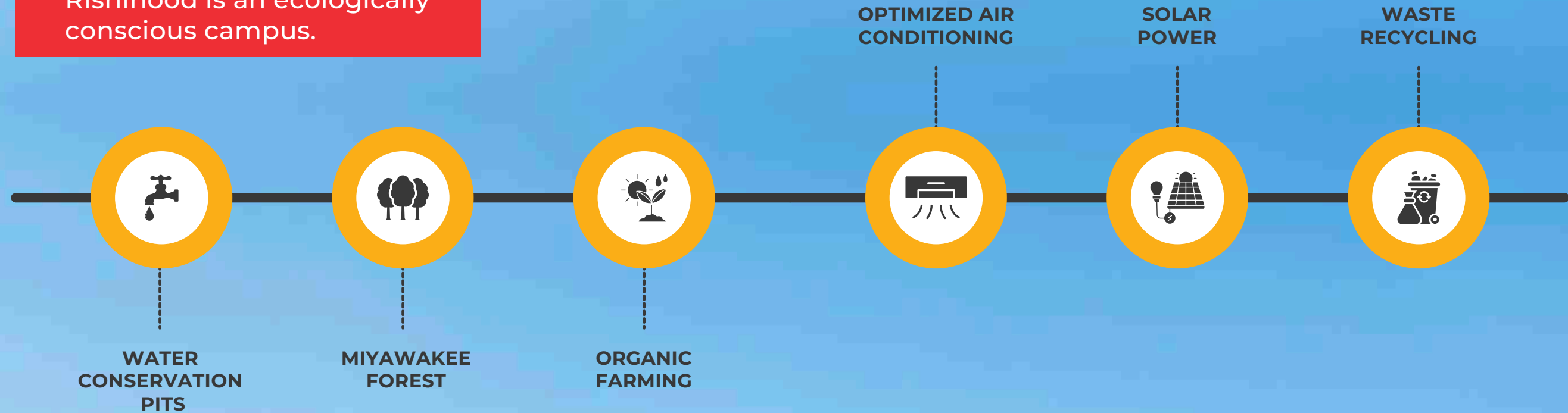
international

# COLLABORATIONS

Rishihood is collaborating with like-minded institutions globally to foster education, research and transfer of knowledge for a sustainable future. These collaborations will stimulate and facilitate mutually beneficial programs and increase international cooperation in teaching, learning & research. The nature of our international associations includes faculty exchange, student exchange, and twinning programs.



Rishihood is an ecologically conscious campus.





*impact initiatives*

## AT RISHIHOOD

---

### Center for Human Sciences

The mission of the Center for Human Sciences, is to carry forward the vision of the seers and sages of Bharat through various academic programs and activities. The Center for Human Sciences is dedicated to contextualizing Sri Aurobindo's philosophy, Indian Knowledge System, and Sanskrit to a large number of socio-cultural settings & strengthening India's soft power to solve contemporary problems and attain spiritual unity of mankind.

### Central University Research Cell

At Rishihood, we support outstanding research and innovation across arts, humanities, and social sciences. By producing original research, we aspire to deliver significant cultural, social, and economic benefits to communities regionally and globally.

We look forward to inculcating enthusiasm for research in learners from early on and equipping them with a methodological understanding of referencing styles and citation, data collection and analysis, preparation of proposals and reports, identifying research funding sources, and writing grant letters.

### Incubation & Venture Funding

Funding is central to the survival and sustenance of any organization. Seed funding at the Rishihood University Incubation Center provides capital for the startups of learners. The University provides this support in the form of office space, facilities, and mentorship to help the start-up take off. At Rishihood, we promote an entrepreneurial mindset and support learners from all areas of study to venture into the area of new business formation through incubation & funding.

*integrating technology*

## FOR A FUTURISTIC IMPRINT

---

### Cognition and Learning Lab

At Rishihood, we are building an academic experience which creates leaders that will shape the future. Technology is going to be the mainstay in the future. With that in mind, the Cognition and Learning Lab has been set up as a research lab dedicated to the advancement of learning at Rishihood. The lab is poised to be the most advanced lab of its kind in the country. The lab will take an interdisciplinary approach to explore questions related to learning, cognition and neurosciences, from designing instructional modules and student collaboration to faculty development. The lab will focus on making Rishihood an AI/IoT and Meta enabled campus. Learners will engage in VR to decode problems from diverse domains. It will also create entrepreneurial ventures and produce research and publications that will answer questions from the emerging future.



## *life at* RISHIHOOD

Living at a residential campus is an experience of a lifetime. Rishihood University provides a vibrant range of cultural, recreational, and social activities for the students. With so many choices, students can learn new skills or engage in sports, discover talents that they never knew they had and make friendships that will create memories for a lifetime.

### **Infrastructure facilities include:**

Learning Spaces | Accommodation Spaces | Dining Services | Knowledge Resource Centre | Sports Complex and others



## *lifelong learning* AT RISHIED

Bringing continuous and self-motivated learning within reach, Rishihood engages inquisitive minds across ages, professional backgrounds, and career tracks. RishiEd - the lifelong learning-focused wing of Rishihood, offers a wide array of courses and programs on public policy, leadership education, mental wellness, and effective learning interventions.

Take deep dives into public policy informed by civilizational ethos, embrace mid-school sabbatical years to upskill and relearn, and revel in recreational breaks designed to amp up the fun factor in formal education.

### **Programs offered include -**

Public Policy Program for Executives | Policy Boot Camp | World Governance Yatra

Indic Summer School for High School Students | Indic Summer and Winter Fests

Anvesha - GAP Year Program

*amongst others*





## *rishis of* **THE FUTURE**

What do we look for in our learners?

At Rishihood, we aim to create impactful leaders of tomorrow. Through our fluid and interdisciplinary learning framework, learners experience transformation at multiple levels of individual and societal growth. Some of the hallmarks of a Rishihood learner include

-  Creative and lateral thinking
-  Integrity
-  Collaborative skills
-  Problem-solving ability
-  Ownership
-  Dedication
-  Openness to change
-  Risk-taking ability
-  Strength of character

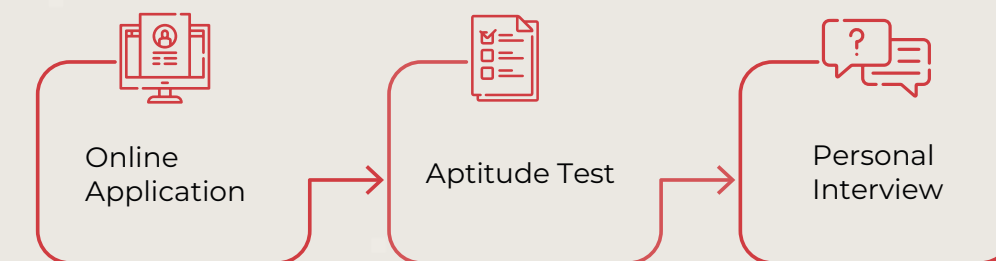
## *admission* **PROCESS**

The admission process at Rishihood University includes a holistic assessment of various facets of a learner's personality. We are looking for the next generation of global leaders who can display a balance of quantitative and qualitative skills and create the future. Learners are evaluated on the basis of overall performance across our selection criteria.

### **Selection Criteria**

- Past Academic Record
- RSAT / SAT / CUET / UCEED / NID / NIFT (Undergraduate)
- RSAT / CAT / XAT / GMAT / CMAT / MAT / NMAT (Postgraduate)
- Statement of Purpose
- Academic and Extracurricular Achievements
- Personal Interview

### **Process**



*\*Candidates applying through SAT / CUET / UCEED / NID / NIFT (Undergraduate) and CAT / XAT / GMAT / CMAT / MAT / NMAT (Postgraduate) may not be required to take the RSAT.*



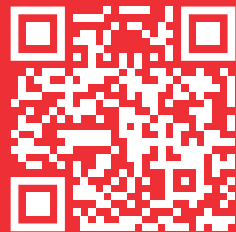
# *scholarships and* **FINANCIAL AID**

At Rishihood, we believe that no deserving learner should be deprived of education for lack of financial resources. To ensure this, we offer financial support to learners on diverse grounds.

## **Scholarships are based on:**

- Merit
- Financial need
- Sports / Extracurricular achievement
- Diversity

## **Fee Structure**



*\*\*Haryana domicile students are eligible for fee concessions as per the state government regulations.*

