

**FUTURE IN THE
CORPORATE
WORLD BELONGS TO
SPECIALIST LEADERS
"BE THE LEADER!"**



HOW TO APPLY

Application form can be directly bought from the institute on payment of Rs. 1000/- in cash or students can fill online application form and make payment through Credit Card/Debit Card/Net Banking on the website : www.dihe.co.in

All the fields in Application forms are to be submitted with attested copies of certificates and two passport size photographs within 10 days to the admission cell of the institute.

For any further query kindly contact our helpline number 7678207775 / 8178302719.

Follow Us on:



Contact Us



DELHI INSTITUTE OF HIGHER EDUCATION

7678207775/ 8178302719
01205161202

admissionpg@dihe.co.in

Plot No. 20 C, Techzone IV, Greater Noida West,
Gautam Budh Nagar - 201306, UP, India

www.dihe.co.in

PGDM

TWO YEARS FULL TIME PROGRAMME



AICTE Approved
(Ministry of HRD, Govt. of India)



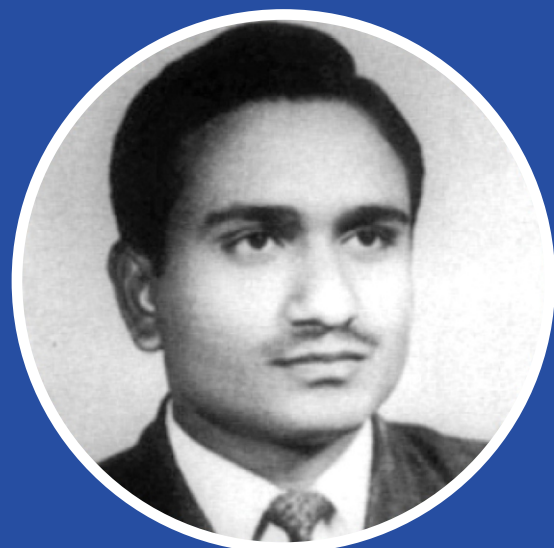
Knowledge
Partner



Shri Ram College of
Commerce



DiHE



Late. Sh. Jagannath Gupta
(1950 - 1980)

Our Vision

To be a globally recognized institution, nurturing leaders and creating social impact through excellence in education and research.

Core Values

Integrity and Ethics

Transparency and Accountability

Innovative Learning and Development

Entrepreneurship and Diversity

Social Responsibility and Environment

Our Mission

- Evolve as a globally recognized institution of learning providing high-quality education.
- Achieve academic excellence through curriculum up-gradation, faculty development, quality research and innovative learning.
- Nurture and develop future-ready students equipped with leadership skills and values essential to succeed in national and global business organizations.
- Create social impact through execution of projects and activities, which change and improve lives of people and communities.

ABOUT US

DELHI INSTITUTE OF HIGHER EDUCATION has been established by the JIMS group which has been running HE Institutes for the last 25 years. Our vision is to provide a skill based education, which shall prepare our budding managers to meet the challenges of a changing industry landscape. It believes in preparing industry ready managers, who are aware of the changing dynamics of corporate and business culture, along with a foresight towards the new avenues opening up. Our academic and corporate partners will participate in the admission process, undertake curriculum design, select eminent faculty and provide internship and mentoring support. This immersion is to ensure that the students are ready to hit the road and are productive from day one of joining their companies.



Dr. Amit Gupta

CHAIRMAN'S MESSAGE



DELHI INSTITUTE OF HIGHER EDUCATION was established in 2023 with a clear vision and purpose. It was envisioned that in the foreseeable future it would evolve into a world-class business-school recognized for its commitment to high powered quality education and research. DihE is also committed to developing outstanding professionals & entrepreneurs, who exemplify humanistic values, are socially responsible stewards who will create & disseminate practitioner-oriented knowledge that will uplift society.

The current global business environment is driving India Inc. to rethink strategy, reassess agendas & revisit several of the long-standing rules of the game. Leadership is being stretched for direction & results; management is being tested for fortitude & having a balanced head-on-shoulders approach to keep the momentum going. As the business world gets more complex B-School recruits will need to be equipped with new skills-sets, innovative ideas and a heightened mental toughness to sail through the current corporate turbulence.

In order to keep pace with the velocity of change and thrive in an uncertain environment, DihE has already shifted gears to a mode of mastering change. It has launched several strategic initiatives at both the macro and micro levels to ensure that students' overall development is in tune with the present demands and expectations of industry. At DihE, our strategic focus in future will address areas of curriculum design, mentoring & live project, advanced statistical software training, international summer internship, soft skills, stress coping & EI learning. These initiatives will focus on developing student competencies in dealing with global complexity, emerging technologies, change, social & cultural diversity.

I am confident that our 'high values adding' initiatives will help create tomorrow's skilled leaders as 'value' is all about upskilling individuals and contributing to business results.

GOVERNING BODY

DihE is promoted by eminent and nationally renowned education lists who have successfully established a number of H.E Institutions. All Group institutions are renowned in the country for providing high quality education and have been awarded accreditations from NAAC, NBA and AIU. Dr. Amit Gupta is an entrepreneur, philanthropist and scholar of national eminence. He is a Commerce Graduate from the reputed Shri Ram College of Commerce, an MBA from Indian Institute of Foreign Trade and a Ph.D in International Business from Guru Gobind Singh Indraprastha University. He has been awarded Shiksha Ratna Award and Gold Medal by Institute of Economic Studies for his outstanding contribution to the development of education in India.

DihE has a very illustrious Governing Board with distinguished Senior Academic and Corporate Advisors from diverse background. By virtue of their leadership positions in respective industries and communities, Board members garner support for the research, teaching and service initiatives of the Institute

Dr. MAHESH GUPTA
CMD,
KENT RO Systems Ltd.



PROF. PARAG DIWAN
Former VC, UPES
CEO, Paradigm
Consultant



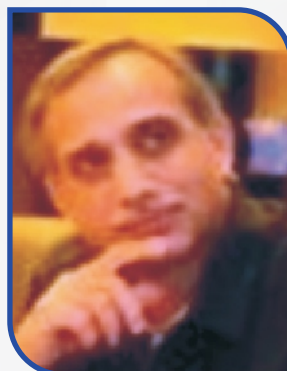
Dr. A.K. SEN GUPTA
Former Dean, IIFT



Dr. G.P RAO
Founder, Good
People Relations
Former Chief HR,
Reliance Industries



MR. RASHMANI MEHRISHI
Director, Zenta
Healthcare



PROF. G.K. AGARWAL
Prof., IMI



STRATEGIC ASSOCIATION WITH SRCC

Delhi Institute Of Higher Education has entered into a Strategic Association with the prestigious Shri Ram College of Commerce (SRCC) University of Delhi, the country's top most college in business studies/ management education. The agreement is designed for capacity building of the Institution and human resource management and development. Shri Ram College of Commerce (SRCC) will provide consultancy support in the areas of institutional development curriculum design and implementation. The unique Association will cater to the below mentioned areas:«

- * FDPs in research and consultancy
- * Placement assistance for students by SRCC experts.
- * Training and mentoring by SRCC academicians.

WHY CHOOSE

DELHI INSTITUTE OF HIGHER EDUCATION

Domain expert sessions, Career Boot Campus, Live Projects and Hackathons are conducted. Placement opportunities from 100+ companies. DihE has relevant tie-ups with eminent organisations to develop Centres of Excellence in their respective areas and impart new age training to students. 25% of faculty are corporate practitioners. 5+ add on certifications in the area of Fintech, Digital Marketing, Business Analytics, Foreign Languages etc.

VALUE ADDED CERTIFICATIONS

Digital Marketing
Fintech
Advance Excel
Lean Sigma workshops
Python Workshops

STUDY TRIP* TO DUBAI

Delivered in the heart of Dubai, one of the world's foremost business and trade capitals, the one week global immersion program includes daily classes, Industry Visits to Apple, Nestle, Pepsico etc. with Project assignments on Dubai market and exclusive visit to Global Innovation Centres of GE, Accenture, EY, Mastercard, Etihad, Intel. Students gain International experience at the prestigious Australian Curtin University (Dubai campus) which is ranked amongst the top 1% universities in the world.

* Subsidized Rates





INFRASTRUCTURE

Rich library with Journals, Magazines, E-Books and Online Databases. Smart Classrooms with Wi-Fi Advanced Computer Labs with latest software. Conference, GD/PI rooms and Auditorium with latest audio visual aids. Fully secure with CCTV cameras multiple sports facilities for Basketball, Football Lawn, Tennis, Skating and Cricket are available inside the institutes premises.

PROGRAMME HIGHLIGHTS

Mentoring by
Business Leaders



Industrial Visits in
Multinational companies



Placement Opportunities
from 100+ Companies



25% of Faculties are
Corporate Practitioners



Programme implementation
by Industry Experts



Certifications & Degree
as per Industry requirement



Guest Lectures
by Industry Experts



Experiential
Learning



Summer Internships
in renowned companies



PDP
Sessions



PGDM

CHOOSE A DOMAIN OF YOUR INTEREST
with Knowledge Partner **EY**

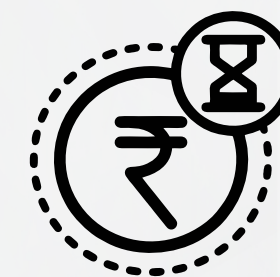


RESEARCH & BUSINESS ANALYTICS

Post-graduate Diploma in Management (PGDM) in Business Analytics with knowledge partner EY provides a global opportunity for individuals to build their career in the area of Business Analytics. It aims to provide in-depth knowledge of Business Analytics techniques and their applications in improving business process and decision making.

USP's:

- > Industry-recognised EY certificates will be provided
- > Courseware co-developed and supplied by EY.
- > EY member on boarded on DiHE committees.
- > DiHE Faculty trained by EY.
- > Guest Lectures provided by EY Experts.



BANKING AND FINANCIAL SERVICES

Post-graduate Diploma in Management (PGDM) in Banking and Financial Services is an industry - led future skills program with value addition of Digital Banking and Fintech. It aims to develop professionals with domain knowledge and skills in banking and Financial sectors.

USP's:

- > Content + Teaching + Academic Partnership with industry.
- > Innovator through design thinking
- > 240+ Corporate Partnerships
- > 120+ Academic Exports
- > 1250+ Corporate Coaches
- > 20k+ Students and Alumni
- > 80+ Community Members
- > 82% Placement Percentage
- > 1:35 Companies to Student Ratio



MARKETING & HR

Post-graduate Diploma in Management (PGDM) in Banking and Financial Services is an industry - led future skills program with value addition of Digital Banking and Fintech. It aims to develop professionals with domain knowledge and skills in banking and Financial sectors.

USP's:

- > Job linked PGDM Programme
- > Engagement of corporate partners from day one of selection process
- > Industry ready Managers from Day one of joining the company
- > Placement assurance for all selected candidates through rigorous selection process
- > 200 hours content delivery during 1st and 2nd semester



CONNECT WITH INDUSTRY LEADERS AND POOL OF ACADEMICIANS

DihE takes pride in its intellectual capital consisting of eminent and highly experienced faculty. Our faculty members drawn from industry and academia are renowned for their excellent teaching skills and contribution to management education through the creation of new knowledge. Our faculty also act as 'mentors' and they will enthuse enable and empower students to think out of the box in order to develop them the art of critical thinking and strategic decision making.



STUDENTS' SPEAK



"Curriculum is up-to-date and well recognised in Current Industry scenario. Curriculum has been taken care off very diligently and is revised frequently to as per market requirements by our faculties who have a rich teaching experience".

Sujeet Kumar Singh

The teaching pedagogy @ DihE is through current case studies and industry applications which makes studies relevant and interesting. The projects also tend to simulate real-world scenarios rather being theoretical and traditional.

Aranshu Kumar



We experience excellent ambience and highly supportive faculty and staff with opportunities beyond our imagination which distinguishes DihE from others and preparing us corporate ready.

Vivek Kumar

The infrastructure is great and well-maintained. The classrooms are spacious provided with smart boards and presentation facilities. Library is well equipped with all necessary Management & Business related books and journals both by Indian and foreign authors.

Anurag Singh



CORPORATE CONNECT

- National and International Conference Seminar / Guest lectures by expert Academicians and Leading Industry Professionals.
- Industrial visits to help students get an interactive and knowledge intensive experience of the corporate world.
- Personality Development Programme where in Corporate Managers are invited to conduct mock GDs and interviews in addition to delivering lectures on Personal Effectiveness, Goal Setting, Time Management, Stress Management, Business Etiquette, Team Work etc.
- Special PDP modules and Language Lab to enhance soft skills

PLACEMENT ASSISTANCE

- At Delhi Institute Of Higher Education, student skills are assessed, skill gaps are bridge and get them connect with the right careers.
- Emphasis and focus is on practical exposure and hands on experience that comes with "being on the job". A dedicated team of placement cell initiates both on and off campus placement drive and will hold sessions to guide students before the beginning of placement drives. Our placement cell has association with the top corporate firms and brands. Some of our esteemed recruitment associates are as follows:



THE OTHER CAMPUSES ARE



Jagannath International Management
OCF, Pocket-9, Sector-B, Vasant Kunj, New Delhi



Jagannath International Management School
MOR, Pocket 105, Kalkaji, New Delhi



Jagannath Institute of Management Sciences
JIMS Vasant Kunj-II, Plot no- 3, Institutional Area, Phase -II, Vasant Kunj, New Delhi-110070



Jagannath University
Village Rampura, Tehsil Chakshu, Jaipur (Rajasthan)

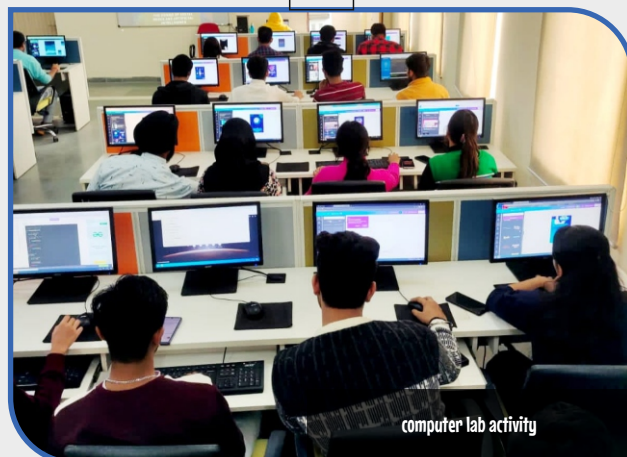
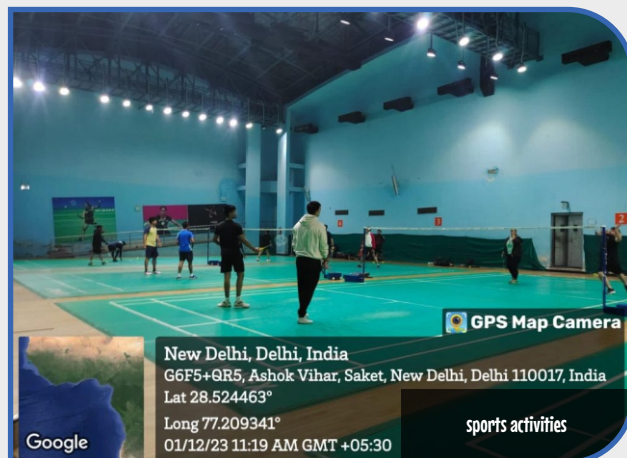


Jagannath Institute of Management Sciences
3, Institutional Area, Sector 5, Rohini New Delhi



Jagannath University
BahadurGarh (Haryana)

Student life Outside Classroom



ELIGIBILITY REQUIREMENTS

- To be eligible for admission to the PGDM Programme, the aspirant must possess a bachelor's equivalent degree, with a minimum of 50% aggregate marks for or equivalent in any discipline, from a recognized university in India or abroad (recognized by UGC / Association of Indian Universities).
- Candidates appearing for the final year of Bachelor's degree/equivalent qualification examination in the year 2024 can also apply. However, such candidates have to submit a certificate from the Principal / Registrar of their University/Institution certifying that the candidate has obtained 50% marks or equivalent based on the latest available grades/marks. The deadline for submission of the marksheet and the certificates is October, 2024. Non-fulfillment of these conditions will automatically result in the cancellation of the provisional admission granted.
- All candidates are required to appear Aptitude Tests- CAT / XAT / MAT / ATMA / NMAT / CMAT

SELECTION PROCESS

- Only short-listed candidates will be called for Written Ability Test / Extempore, Group Discussion and Personal Interview.
- Candidates are evaluated on the basis of GD/PI / CAT / XAT / MAT / ATMA / CMAT scores prior academic excellence, work experience etc. disclosed in the application form.

HOW TO APPLY

- Candidates are required to register with DiHE (Greater Noida West), through Online Application Form which will be available along with Information Brochure @ www.dihe.co.in, for Rs. 1000/- in cash or for online payment through Credit/Debit card or Net Banking.
- Refund: In case of withdrawal of Admission original documents will be returned within 7 days, the fees taken will be refunded as per AICTE norms. No refund of Tuition fees after commencement of classes.

PROGRAMME FEE SCHEDULE

INSTALLMENTS	AMOUNT (INR)	TIME
FIRST	1,42,500/-	1-Jul-24
SECOND	1,42,500/-	1-Dec-24
THIRD	1,42,500/-	1-Jul-25
FOURTH	1,42,500/-	1-Dec-25
TOTAL	5,70,000/-	

Additional Refundable Security Deposit of INR 5,000/-

MERIT BASED SCHOLARSHIP

Eligibility	Graduation	MAT/CAT/CMAT Score	GD/ PI Score
50% Scholarship	80%	700/ 80%/ 250 and above	80
40% Scholarship	75%	650/ 75%/ 225 and above	75
30% Scholarship	70%	600/ 70%/ 200 and above	70

On first year fee

Accommodation Facility

- DiHE, Greater Noida West offers Hostel facility for both Boys and Girls. The room availability will be on first-come-first-serve basis.

Hostel Fees:

- INR 11,000/- per month (132,000/-year) excluding electricity bill for Non- Balcony room.
- INR 11,500/- per month (138,000/-year) excluding electricity bill for Balcony room.